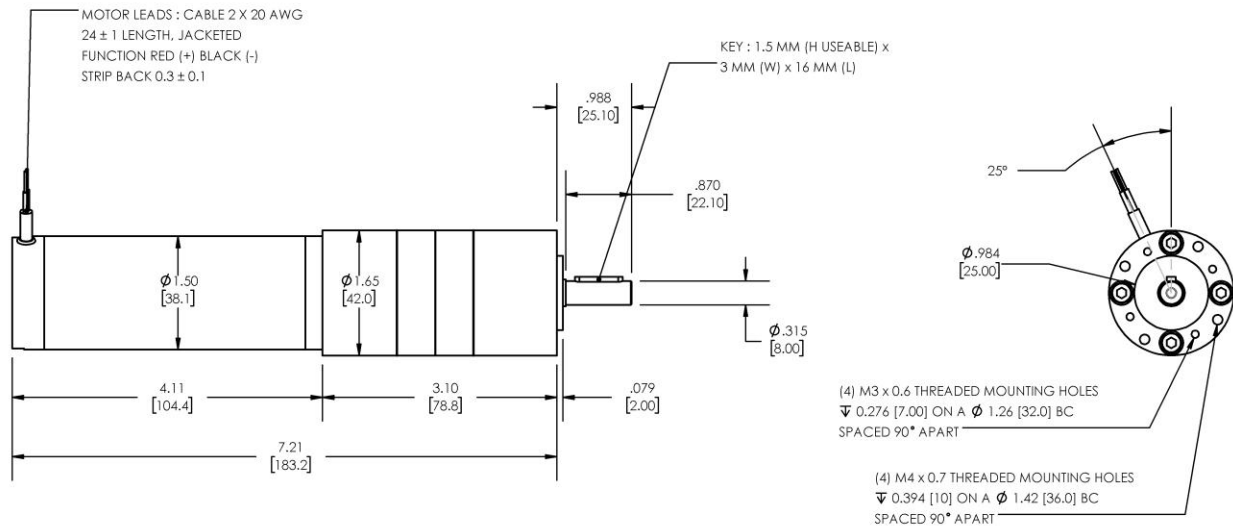


Model Number:
MMP S17-400C-24V GP42-025


DIMENSIONS ARE INCHES [MM] UNLESS OTHERWISE STATED

| PLANETARY GEARMOTOR OUTPUT PARAMETERS: | VALUE | UNITS | TOLERANCE |
|--|-----------|-------------|-----------|
| Gearhead Ratio (exact) | 25.01 : 1 | | |
| Gearhead Shaft Output Speed (at full-load) | 205 | RPM | MAX |
| Gearmotor Rated Continuous Torque | 14 | In-Lbs | MAX |
| Gearmotor Rated Peak Torque | 49++ | In-Lbs | ---- |
| Gearhead Standard Backlash | 57 | Arc Minutes | MAX |
| Gearhead Efficiency | 75% | ---- | ---- |
| Output Shaft Radial Load Capacity | 52 | Lbs | MAX |
| Output Shaft Axial Load Capacity | 18 | Lbs | MAX |
| Gearmotor Total Weight | 2.3 | Lbs | MAX |

++ All Peak Torque values are dependent upon duty. Contact our sales office for details.

| DC MOTOR PERFORMANCE PARAMETERS: | VALUE | UNITS | TOLERANCE |
|----------------------------------|-------|-----------|-----------|
| Rated DC Voltage | 24 | DC VOLTS | ---- |
| Rated Continuous Current | 3.06 | AMPERES | ---- |
| No-Load Speed | 6704 | RPM | MAX |
| Rated Speed | 5120 | RPM | +/- 15% |
| Rated Continuous Power Out | 46 | WATTS | +/- 15% |
| Rated Continuous Torque | 12 | OZ-IN | ---- |
| Peak Torque (motor only) | 42 | OZ-IN | ---- |
| No-Load Current | 0.53 | AMPERES | MAX |
| Back EMF Constant (Ke) | 3.6 | V/KRPM | +/- 10% |
| Torque Constant (Kt) | 4.9 | OZ-IN/AMP | +/- 10% |
| DC Armature Resistance | 1.86 | OHMS | +/- 15% |
| Armature Inductance | 0.25 | mH | +/- 15% |
| Armature temperature | 155 | DEG. C | MAX |

NOTES:

- ENCODER & BRAKE OPTIONS AVAILABLE – [FOLLOW THIS LINK FOR DETAILS](#)
- NEMA MOUNTING FLANGE OPTION AVAILABLE – [FOLLOW THIS LINK FOR DETAILS](#)

MIDWEST MOTION PRODUCTS
DESIGN, MANUFACTURING & DISTRIBUTION - MOTION CONTROL EQUIPMENT
www.midwestmotion.com

 email: sales@midwestmotion.com